

May 2024

The

BRAMLEY

FOR BRAMLEY AND LITTLE LONDON

Magazine

- **St James' Way**
- **The Show Can Go On**
- **Bramley Greening Campaign Gets Started**

883388

881312

MEKANIX

Bramley's Garage since 1947

MOT

Servicing

Repairs

Car Sales

Diagnostics

Air Conditioning



find us next to the
railway station
behind the bakery



The Bramley Magazine

for Bramley and
Little London

May 2024

Chairman of Steering Group:

Rhydian Vaughan MBE
chairman@bramleymagazine.org.uk

Joint Editors

Rachel Barclay Smith
Georgie Blake
editor@bramleymagazine.org.uk

Schools Editor:

Emily Sykes

Advertising:

Keith Dilliway
bram.mag.adverts@gmail.com

Treasurer:

Nairn Glen
bramleytreasurer@gmail.com

Rector:

Rev'd Mark Anderson
revmarkanderson4@gmail.com
07480 067756
www.stjamesbramley.com

Churchwardens:

Malcolm Knowles
01256 880712
malcolm.knowles@hotmail.co.uk

Rachel Barclay Smith
01256 541251
rbarclaysmith@gmail.com

Bramley Parish Council

Clerk: Maxta Thomas (07810 692486)
parishclerk@bramleypc.co.uk
Chairman: Anthony Durrant
www.bramleypc.co.uk

Artwork and Printing

Greenhouse Graphics
Unit 8, Cufaude Business Park,
Cufaude Lane, Bramley,
RG26 5DL
01256 880770
www.greenhousegraphics.co.uk

*Produced and delivered by the Church
for the benefit of the community.*

Editorial

One of the first walks we discovered when moving to Bramley, was the circular walk which starts and ends at Bramley train station and includes the Roman walls at Silchester. I hadn't realised until I read Grahame Mellor's article in this month's issue that this is in fact the part of the English portion of the St James Way, the pilgrimage which ends at Santiago De Compostela. I was lucky enough to visit Santiago De Compostela back in 2006, and witnessed many pilgrims arriving at their final destination. I did not make the connection that the village I now live in is part of this pilgrimage - a real full circle moment for me. Next time you are walking between Bramley and Silchester, see if you can spot the blue Camino Inglés signs on your way. The walk includes the Frith (the woods by the power station), where the bluebells are currently out (see cover photo), so do go see them while they're in bloom. You can read more about the St James Way on p. 16, and if you enjoy a walk, then have a look at p. 4 to find out more about this year's 'Beating the Bounds' walk organised by St James Church.

Other things in this month's issue: the children at Bramley school have been participating in lots of sporting events (p. 6), while Little Apples are getting ready to start school (p. 17). The Bramley & Romans floral society are having to get creative with alternatives to oasis (floral foam) to help with flower arranging on p. 20 and the Guides have had a very busy term (p. 13).

As we approach summer, there is much going on in Bramley, including the Bramley fête in May (p. 13), the Sherfield fête over in our neighbouring village in June (p. 19), and the commemorative D-Day event on Clift Meadow, also in June, organised by the Bramley Parish Council (p. 10, 11). You will be pleased to hear that the Bramley Show is back for another year, this time in September – more details can be found on p. 17.

I hope you enjoy the issue.

Georgie

Joint Editor

"The journey of a thousand miles begins with one step"

Lao Tzu

Can you help?

We are looking for someone to deliver the Bramley magazine to houses 1 – 50 in Moat Close. It takes less than an hour a month and you only need to do the deliveries 10 times a year.

If you can help or if you would like more information, please contact Rachel or Georgie on editor@bramleymagazine.org.uk

Thank you.

Cover Photo: Bluebells in the Frith

Material for the June issue to be sent (preferably by email) to the editor no later than 15th May please.



What's on in Bramley



Beating the Bounds – Monday 6th May

Following the success of last year's Coronation Walk, this Bank Holiday Monday (6th May), we are embracing the tradition of Beating the Bounds of our parishes. This will be a cross-country group walk around the local parishes of Bramley, Sherfield-on-Loddon, Hartley Wespall and Stratfield Saye. We hope to be greeted in each parish by ringing of the Church bells.

We will be starting at St Leonard's (on the A33 between Sherfield village and Sherfield Park) with tea/coffee and rolls (09:00 – 09:30), departing at 10:00 for a 12 mile route, finishing with a BBQ at St James, Bramley, at about 16:00.

Due to expected soft ground, a route more oriented to quiet roads, with some scenic rural footpaths, is planned. Please consider your abilities and appropriate clothing/footwear, as well as leads for dogs.

All are welcome, for all, or part of the walk, and the events at either end. The Wellington Arms (on the A33) have again kindly offered use of toilets and the ability to grab a quick drink/bite. This is about halfway round, and we expect to be there around 12:30.

Please contact admin@stjamesbramley.org.uk if you have any questions.

Clift Meadow Community Café

Bramley Coffee Mornings run every Wednesday during term time from 10:00 – 11:30 am in Clift Meadow pavilion.

Upcoming sessions:

1st May

Coffee, tea, cake and biscuits – enjoy a cuppa with friends

8th May

Coffee, tea, cake and biscuits – have a break, have a cuppa

15th May

Monthly raffle for our 'men that mow'

22nd May

Plant Swap – bring in seedlings and young plants you wish to swap

HORIZON SOUND & VISION

Family Run Business Est 1988

- **Aerial, Satellite & Sky Q**
Freeview, Freesat
- **Tuning & Set Up**
*Remote control programming
Weak/No Signal Repairs*
- **TV Wall Installation**
Hidden Cabling
- **Additional TV Points**
- **Wi-Fi Signal Improvement and Network Cabling**
including garden area and outbuildings
- **CCTV Installations**
Including Ring doorbell
- **Starlink Installation**
Superfast Internet for Rural Areas



Proud members of
Checkatrade.com
Where reputation matters

01256 841860

Essex Road Basingstoke
www.horizonsoundandvision.co.uk
info@horizonsoundandvision.co.uk



BUTTER DAISY NURSERY

Quality day nursery for children
aged 3 months to 5 years

Private, spacious nursery in a characterful
setting, beautifully designed to support the
individuality of every child.

Open 7.30am to 6.30pm, 51 weeks a year
for full days and part-time sessions.

Participates in the Early Years Education
scheme, funding places for all 3- and
4-year-olds and eligible 2-year-olds.

01256 882515

Easy access to
Basingstoke
and Reading.
Ample parking.





Church diary for May...

5th	6th Sunday of Easter
9.00	Sunday@nine – Cross House
10.30	BCP Matins – St James
12th	7th Sunday of Easter
9.00	Sunday@nine – Cross House
10.30	Holy Communion – St James
19th	Pentecost Sunday
10.30	Open Air Service – Clift Meadow
26th	Trinity Sunday
9.00	Sunday@nine – Cross House
10.30	Holy Communion – St James

And into June...

2nd	1st Sunday of Trinity
9.00	Sunday@nine – Cross House
10.30	BCP Matins – St James
9th	2nd Sunday of Trinity
9.00	Sunday@nine – Cross House
10.30	Holy Communion – St James
16th	3rd Sunday of Trinity
9.00	Sunday@nine – Cross House
10.30	Morning Worship – St James

Other local churches

St Bede's, Catholic Church

Popley Way, Basingstoke, Hampshire RG24 9DX
<https://www.stbedesbasingstoke.org.uk>

St Michael's, Catholic Church

Bishopswood Road, Tadley RG26 4HG.
<https://stmandsto.org.uk>

Breach Lane Baptist Chapel

Sherfield on Loddon
 For information on services please contact
 Geoffrey Belsham on 01256 882534

Benefice Services

May

5th	6th Sunday of Easter
10.00	Holy Communion – St Leonard's, Sherfield on Loddon
10.00	Family Service St Mary's, Stratfield Saye
18.30	BCP Evensong - St Mary's, Hartley Wespall
9th	Ascension Day
10.00	Holy Communion – St Leonard's, Sherfield on Loddon
12th	7th Sunday of Easter
10.00	Café Church – Sherfield Park Community Centre
19th	Pentecost Sunday
10.00	Holy Communion – St Leonard's, Sherfield on Loddon
10.30	Family Service – St Mary's, Hartley Wespall
26th	Trinity Sunday
10.00	Morning Worship – St Leonard's, Sherfield on Loddon

June

2nd	1st Sunday of Trinity
10.00	Holy Communion – St Leonard's, Sherfield on Loddon
10.00	Family Service St Mary's, Stratfield Saye
18.30	BCP Evensong – St Mary's, Hartley Wespall
9th	2nd Sunday of Trinity
11.00	Songs of Praise – Sherfield Village Green
16th	3rd Sunday of Trinity
10.00	Holy Communion – St Leonard's, Sherfield on Loddon
10.30	Family Service – St Mary's, Hartley Wespall

Sports at Bramley Primary School

At Bramley Primary School, we firmly believe that an active body leads to a healthy mind. That’s why we encourage our children to participate in sports and enjoy being physically active. As a school, our key principles are:

- To provide many opportunities for physical activities
- For children to enjoy being active and taking part in team games
- To develop the fundamentals for physical activity – agility, balance and co-ordination

We are proud of our school provision for P.E., to develop the children’s ability to lead healthier lifestyles and to understand the positive impact activity and playing with others can have.

Competitive Sports

In addition to the physical activities we offer in school, we also value the opportunity for children to take part in competitions to put their skills into practice.

At the end of each term, we hold the House Games where each year group works together in a range of team games to earn points for their house with the aim of winning the House Sports – a fun way to apply the new skills they have been learning all term.

Many adults also lead sports clubs through the school for those with a keen interest, to develop their skills and to build a school team for local competitions. For the children, to wear the school kit and to go out on the minibus to represent our school is a great experience and real privilege.

Gymnastics – in February, a group of year 2 children took part in a gymnastics competition at the Active Life Centre in Basingstoke. The children picked up the routine quickly and were so confident to perform each part independently for the judges. We were thrilled to come in 3rd place!

Tag-Rugby - each term our tag-rugby team takes part in mini tournaments against local schools. The points from each meeting are then cumulated in a league. In the summer term, they then take part in a full tournament day where they get to put their skills to the test against many schools in north Hampshire. The children’s skills and confidence have developed with each of their tournaments.

Netball – Our netball team, made up from girls and boys in Yr. 5 and 6 has grown in size and confidence as the season

has gone on, and their winning streak in the local league has shown this! Their speed of passing and regaining possession if it is lost is a great strength, and shooting skills have developed nicely. We won our league and progressed to the district finals held in Basingstoke – although we didn’t fare as well on the day, it was a fantastic experience to play so many matches against the best local sides.

Football – The main competitive matches take place for the Yr. 5 and 6 teams, again within local mini-leagues.

It is the first time we have joined the local girls’ football team league and they have experienced fantastic success. Their quarterfinals match went down to a nail-biting penalty shoot-out to reach the district finals afternoon at The Vyne School. The opposition in the finals were of a fantastic quality and we are incredibly proud to be one of the 4 top schools in Basingstoke!

The boys’ team have also won their league, showing great strength in attack and playing confidently as a team. We now need to play the quarter finals match to see if they progress further.

The children in Yr. 3 and 4 have been able to train and play in some friendlies this year and two Yr. 2 teams have been out for events organised at local secondary schools – fantastic opportunities for children to apply their growing skills and confidence.

We hope to continue our success and the children’s enthusiasm with athletics, cricket and rounders events in the summer term.

0118 933 2014 www.dadsshop.co.uk West End Rd, Mortimer, RG7 3TE

DADS SHOP
D.I.Y
For Home & Garden

Everything for your D.I.Y, Home & Garden needs



. Hardware	. Gardening
. Kitchenware	. Timber
. Tools	. Ironmongery
. Plumbing	. Decorating
. Electrical	. Building

and much more...



explore engage enjoy excite
Registered Charity No. 1045353
Little Apples of Bramley
Your local charity pre-school

Are you looking for an excellent pre-school for your child, where “Children’s emotional well-being is fostered by staff who nurture children’s confidence and successfully support children to reach their next steps in their learning” (Ofsted, 2020)?

We are a charity run for the benefit of the children of our community by experienced, qualified and friendly staff. We offer excellent care and education in our inviting hall and large garden for children from 2 years old.

Why not pop up for a visit?
Telephone Jo on 07598 588460
Email : manager@littleapples.org
Visit <http://www.littleapples.org/>
or search for our facebook page

Did you know.....?
•You can choose any of our opening hours as EYE grant funded hours, whether your child is eligible for the universal funding of 15 hours per week age 3-4, 30 hours per week or the 15 hours per week 2 year old offer.

Rev'd Mark Anderson reflects on walking with purpose, in this month's On Reflection

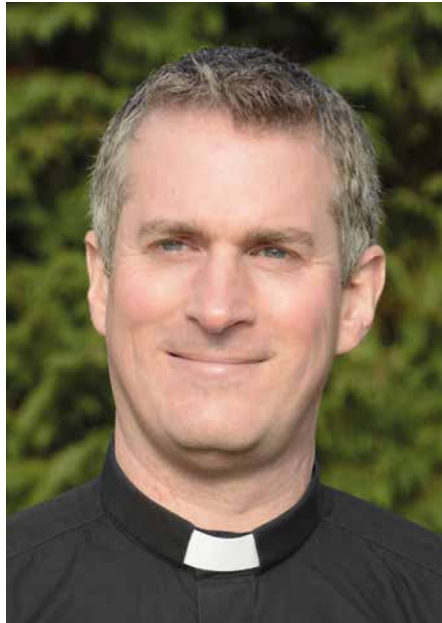
We walk from place to place. Out of bed to make a cup of tea, perhaps on part (or all) of a daily commute, or around the beautiful countryside surrounding where we live. Today, in mid-April when I am writing this, I walked to St James Church and happened to meet three people walking on the St James Way - an ancient pilgrimage way.

Many of us walk but few of us go on pilgrimage. One of the most famous (and earliest) works of literature in English is The Canterbury Tales: stories about individuals who are part of a group of pilgrims travelling together from London to Canterbury to visit the shrine of Saint Thomas Becket at Canterbury Cathedral. At St James Church (open every day) you can see a medieval wall painting of the murder of Thomas by the knights of Henry II, perhaps painted around the same time as Chaucer wrote those tales.

So, what makes a walk into something more significant? Pilgrimage is a physical journey mirrored by an inner journey toward truth. I was interested to read this (by 'Kerstin47') on a Camino de Santiago message board:

I had to learn the difference (between a long walk and a pilgrimage) - even though that is what I was seeking - whilst walking. What I found in the quiet, in the perseverance, the love and hate, the loud (annoying, and I include my own) humanity and the loving beautiful humanity, in the beauty and in the struggle is the pilgrimage...right? It's not just a leisurely walk - it's overflowing with what we seek.

We all seek something, even beyond ourselves. I believe we are all spiritual people and a walk in the open countryside is a time when we can enjoy the beauty of creation and be inspired to reflect on all those aspects of life which have deeper and more significant meaning to us personally. Life is busy, full up, we are often distracted. Walking (as a pilgrim



Rev'd Mark Anderson

or not) slows us down in every way, but especially physically and spiritually.

St James Church is part of a Benefice (church word for group of churches) of 5 parishes: Sherfield on Loddon, Hartley Wespall, Stratfield Saye, Stratfield Turgis and Bramley. As we did last year (to mark the coronation) we are walking 12 miles, visiting each church. Starting at St Leonard's, Sherfield (9am with bacon rolls), ending at St James, Bramley for a BBQ.

This year we are calling it a Rogation Walk. It's a time to 'beat the bounds' of the parishes, which is a tradition (since medieval times) in rural villages when the people who lived there (churchgoers or not) asserted the boundary of their parish by beating it with branches, praying for God's blessing upon the crops, seeking the well-being of the village and sharing in

the hope of God's goodness to nourish every endeavour of each person.

So, we follow a Rogation tradition which has its origins in the fifth century AD. At Rogationtide we seek God's blessing for our community and its flourishing. Rogation means "to ask", and so we ask you to join us on this walk on Monday 6 May, whether it's simply a walk to you, or perhaps something more.

Rev'd Mark Anderson
Vicar, St James Bramley

Your invitation to:



**MESSY
CHURCH**



Activities



Songs



Food



Crafts



Games



Stories

**The 2nd Friday of the month at
4.30-5.45pm
Sherfield Park Community Centre.**

The whole family is welcome to join us for fun, Bible based crafts, games and stories.
Picnic tea for children and refreshments for adults

**To book please email Elaine on
stleonardssherfield@gmail.com**

Bramley Village Songs of Praise

**Sunday 19 May 2024
at 1030**

**on Clift Meadow
by the pavilion**

**All are welcome to join us in singing
some of the nation's favourite hymns**

St James Church, Bramley

In this month's issue of **Meet The Neighbours** we are talking to **Adrienne Henry, Bramley's own milliner of bespoke hats.**

Adrienne is well known to many of the ladies in Bramley and fondly referred to as 'the hat lady'. She will be a familiar face to passengers at Bramley station travelling on an early morning train to Reading.

Let's find out more about her.



Where were you living before you moved to Bramley?

We were living near Ufton Nervet in a hamlet called Sulhamstead Abbots. It was a very peaceful place to bring up my family. The property was originally a chicken farm which we turned into a small holding and later into a small garden nursery. We had many animals.

How long have you lived here and what brought you to Bramley?

We moved here in September 2007, following my eldest daughter. We fell in love with our cottage and the village.

Tell us about your family?

Richard, my husband, has always followed his passion for gardening. He supports me with the business which now involves three generations of the family.

I have 3 children and 8 grandchildren, two of whom are here with my daughter in Bramley.

What do you like and appreciate most about living In Bramley?

First and foremost, we love having our family so close to us. Then, it's all about location for us. We can commute easily to Reading and London thanks to the railway station. We find Bramley people very friendly. I meet many people, both on my regular daily walk to the station, and on the train.

What career path did you follow?

I have had an interesting and varied career, from being a Maths teacher in west London, to a milliner.

Can you give us reasons for this change?

My husband Richard has always collected military hats and he bought me two vintage hats one Christmas in Australia, and this inspired me to learn the art of millinery. After several years of study, I gave up teaching to become a full time milliner. My studio is in the centre of Reading in the Grade II listed Art Nouveau Harris Arcade.

Which aspect of your current work do you enjoy the most?

I love designing and hand making individual hats, particularly for special occasions, and also because of my background, I love teaching millinery. Both give me great satisfaction and are rewarding. Wedding hats are our main orders, especially mother-of-the-bride/groom.

Where do you draw your inspiration from?

From all areas, but predominantly nature - although my current theme is liquorice allsorts!

What are your interests and passions?

I am privileged to live my passion through millinery. My mantra is 'always try to follow your passion'.

Are you involved in the community?

I work full time, frequently seven days a week and so my involvement in the village community at this stage of my life is limited. I put on a Hat Show for the WI many years ago and that was great fun.

Finally, Adrienne what style of hats can we expect to see this season at Ascot?

At Ascot many ladies like to wear 'hats that turn heads' hence requests for bespoke creations. This year I am predicting there will be lots of feathers of different sizes and colours, as well as the usual flower decorations.

I make hats for happy occasions!



Sarah Hodnett proudly wearing her hat by Adrienne. Sarah (who moved to Devon in 2022) was well known in the village for her vast hat collection!

The Meadow Garden

Those of you who have visited Clift Meadow recently will see we have a smart new sign. Many thanks to Roger for this. The daffodils are over and soon they will be replaced with vegetables and bee friendly flowers, but the tulips are still giving some colour in the meantime. We may not get the wonderful foxgloves this year as they are biennials, but fingers crossed for next year. This year we are planning to grow climbing French beans, beetroot, tomatoes and chard as well as a selection of herbs. The strawberry bed is pretty much on its last year, so we will be planting new plants next year. The Christmas tree is very healthy and hopefully we may get apples again this year on the apple tree. Our dedicated volunteers give their time and donate compost and plants so the Meadow can continue to give interest and pleasure to those who pass by. We get some lovely comments, so do take a look when you go past.



Bramley WI

At the March meeting of the WI, members made craft Easter eggs. A number of members used polystyrene white balls in the shape of an egg and used small pins and sequins to make a pattern, while others made different designs with other items. They were very effective and looked lovely on an Easter tree (see below picture). At the end of the evening, we had the usual raffle and refreshments.

We had planned to do a walk but guess what - it rained! - and we had to cancel. Hopefully we will be able to get out soon and perhaps do an evening walk as the nights are getting lighter.

In April's meeting, we had two delightful gentlemen, Jake and Mark, who work for the St John's Ambulance. They demonstrated how to give CPR and how to use a defibrillator. They gave us some very useful tips and gave us all a leaflet explaining what they had just demonstrated. Jake and Mark explained that they go to lots of different venues, e.g. football matches, different shows, marathons, and so on. We are going to have them back again in 2025 for a refresher course and to demonstrate any other first aid. The members asked a lot of questions, one of which I think everyone is concerned about, which is that you are going to break a rib when doing CPR. However, as Jake and Mark said, you can mend a rib! During the break for refreshments the members could use "Resusci Annie" and do CPR. They made a serious talk very entertaining, and we had some very funny moments.

We later discussed what we might do during the year and made a date for an evening walk on 2nd May.

Jane Matthews



LFM
 07776 303791
 0800 246 1223
 The Boiler & Bathroom Replacement Specialists
 GAS safe REGISTER



THE LARGEST NAVAL AIR AND LAND OPERATION IN HISTORY

OPERATION OVERLORD

6th June 2024 marks the 80th anniversary of D-Day, when Allied forces mounted the largest amphibious invasion the world has ever witnessed. In 1944, Operation Overlord saw around 4,000 ships and landing craft set down about 132,500 troops on five Normandy beaches in an action that would bring about the liberation of north-west Europe from Nazi occupation. Bramley Parish Council is marking the 80th anniversary of D-Day by lighting a beacon at 21.15 on 6th June 2024 on Clift Meadow, in celebration of the “light of peace” that emerged out of the darkness of war.

Commemoration/Celebration:

- 18.30 - The Church Bells at St James Church will be ringing out for Remembrance and peace along with bell-ringers all over the world
- 19.10 - We will start our Remembrance/Celebration with the band Tin Pan Allies, 5 musicians playing music whilst roaming around the meadow with attendees
- 19.45 - The D-Day Proclamation will be made by our Town Crier, the Rev'd Mark Anderson. Food will start to be available for those attending
- Up to 20.20 - Tin Pan Allies will be entertaining people on the Meadow
- 20.20 – The Sea Cadets, Army Cadets, and RAF Cadets will read out “The D-Day Heroes”, a poem specially written for the anniversary
- Up to 21.05 - Tin Pan Allies continue with their entertainment
- 21.10 - “The International Tribute” will be read by retired Officer Chris Holland
- 21.15 - The beacon is lit along with others across the UK and World in celebration of the “Light of Peace”

This will be followed by the National Anthem, followed by the finale from Tin Pan Allies.

Food will be provided by Hampshire Feast – a portion of Fish and Chips will be available for all attendees free of charge. For over 160 years fish and chips has been a firm favourite of the British public, providing nourishment for the nation. This was never more important than during the war years when the ingredients were left unrationed to help feed those involved in the war effort and keep the country and our factories working.

Other features:

- Soft and alcoholic drinks available to purchase from Southern Bar Services (peterandrewfrancis@gmail.com).

- A display of maps and photographs available explaining the events on that day, 80 years ago (thanks to Cllr Rhydian Vaughan, www.battlefieldtours.co).
- British Legion Display by Luke Holdcroft, RBL Standard Bearer – a voluntary contribution can be made to British Legion.

Thanks to the Commanding Officers of Basingstoke and Deane Sea Cadets, 3 (Basingstoke) Platoon Army Cadet Force, and 2403 (Aldermaston) Sqn RAF Air Cadets.

Thanks to Nick Robinson for the sound system, and A1 Logs for supplying logs and kindle wood for the Beacon.

80TH ANNIVERSARY OF D DAY

BRAMLEY PARISH COUNCIL

BEACON LIGHTING 6TH JUNE 2024

FROM 6:30PM

BEACON LIGHTING AT 9:15PM

BAR AND FOOD AVAILABLE

SEE WWW.BRAMLEY-PC.GOV.UK FOR MORE INFORMATION



Parish Council Update

This month's update comes from Cllr Chris Tomblin.

Elections

If you receive this right at the start of May then a gentle reminder that Thursday 2nd May is Election Day. There are elections for your Borough Councillors and the Hampshire Police Commissioner. Remember you will need photo ID to vote at the polling station. This year it was also the Parish Council's turn for election but there were insufficient candidate applications to call an election, so those standing are re-elected uncontested.

Annual Parish Meeting

On 26th March we held our Annual Parish Meeting which was well attended (of course, more residents are always welcome!) where visiting speakers from various community groups delivered reports of their activities over the last year. The Chairman reviewed the activities of the Parish Council, thanked all community groups and noted that we had issued £18,398 in grants to local organisations.

Cllr Chris Flooks won the Councillor of the Year award for his sterling work as head of the Parish Planning Committee given the vast number of planning applications that we process.

We received reports from Borough and County Councillors, as well as Loddon Community Energy (Bramley Greener Homes), Bramley Youth Club, Bramley Village Hall Trust, Clift Meadow Trust, Wilder Bramley, and the Reverend Mark Anderson delivered a Bramley Church and PCC update.

Altogether a great and informative evening highlighting what a thriving community exists for us in Bramley. I recommend attending next year.

Spring Fete

The spring fete is to be held on Saturday 18th May, an event that Bramley Parish Council is proud to support. Here's hoping for a spell of dry weather!

D-Day Commemorations

Thursday 6th June from 6:30pm on Clift Meadow.

Details are on the poster in this magazine and on the Parish Council website. Please come along to support the village with these celebrations and enjoy free traditional fish 'n' chips (one portion per person collecting), vegetarian and children's portions are also available!

Part of the event will be a display of maps and photos of the D-Day Landings. If any Bramley residents had relatives involved in those momentous landings and have photos of their relatives and a tale to tell, would you please forward them to the Bramley Parish Council Clerk? We can then incorporate them into the display on 6th June.

Planning Updates

The Local plan consultation has now closed. Basingstoke & Deane Borough Council (BDBC) received several thousand responses which are currently being worked through. By getting the draft local plan to the first round of consultation we are able to take advantage of the Government's change in planning policy – if we have a plan in progress, now we only need a 4 year housing land supply target instead of 5. Basingstoke & Deane is at around 4.2 years. This means that our existing planning policies can now protect us from the curse of opportunistic planning that has seen an uncontrolled developer-led free-for-all placing homes in inappropriate, non-sustainable locations.

Stocks farm development - As at mid-April the planning department are expecting to see a revised scheme from the developers. This will be available on the Basingstoke Council website for consultation when it arrives.

Meadow View - At the Basingstoke & Deane Borough Council Development Control meeting, held on 10th April, the Parish Council representatives attended and spoke against the current applications. The application for 1 detached house replacing the old bungalow was approved but the application for 2 semi-detached bungalows was refused.

Next meetings

- May Parish Planning Meeting -Tuesday 14th May at 7:30 pm.
- May Parish Council Meeting - Tuesday 21st (Annual meeting at 7:00 pm followed by the ordinary meeting at 7:30 pm).

Both meeting will be held in the Bramley Room at the Village Hall.

Contact us:

Bramley PC Clerk – Maxta Thomas
 Email: clerk@bramley-pc.gov.uk
 Tel: 07810 692486
 Web: www.bramley-pc.gov.uk
 Facebook page: www.facebook.com/BramleyPC





Royal British Legion

Fancy a game of skittles? We are meeting this month on Tuesday 14th May at The Four Horseshoes in Sherfield for an evening of skittles, a very old and traditional village pub game. We will start at around 7pm and everyone, members and non-members, are warmly invited. If you know the rules you will be especially welcome! There will be a cover charge of £5.

Who knew that the history and development of communications could be so interesting? Steve Day gave a fascinating illustrated talk to members last month from the earliest records of speech, through two tin cans attached by string - many of us did that when we were young - to the setting up of trunk calls via any number of operator run exchanges, to present day voice over Internet calls. Another development, the digital switchover, is due to be rolled out over the next 18 months.

We were delighted to welcome Holly Church, our new county Membership Engagement Officer to our meeting and to learn something of her role as an enabler and link between branches and the County Committee.

It's now time to book your place for our great **Summer Barbeque** on the new patio at Sherfield Oaks Golf Club on **Friday 12 July** from 6.30pm.

Our special guests are Gp Capt Matt Roberts, Station Commander RAF Odiham, and his wife Alison. The club chef is preparing a fabulous menu of meats and salads followed by a choice of desserts. Vegetarian, gluten free and other options will be available. During the evening there will be a 3 Ball Hole-in-One fun competition with the ultimate winner winning the cost of their meal! There's a bar (of course) and a Grand Raffle. A memorable evening is assured, so get together with a few friends and reserve a table. For a booking form, please contact me (details below) or Rhydian Vaughan (rhydian@battlefieldtours.co). We so look forward to welcoming you for a delightful summer evening. If wet, the meal will be served in the club house.



Group Captain Matthew Roberts

John Morley

Branch Chairman
revjmorley@talktalk.net
 07900 892566

Which Council does what in the Borough?

I am often asked the difference between the County and Borough responsibilities. If you want to get something dealt with, it is important to understand who does what. I hope you will find this helpful.

Cllr Rhydian Vaughan

Hampshire County Council



Hampshire County Council is responsible for:

- education - schools and colleges
- transport - roads and motorways, including things like potholes, street lighting and traffic lights
- fire and public safety
- social care
- libraries
- strategic planning
- waste management – household waste recycling centres
- trading standards.
- countryside and country parks

To find out more about Hampshire County Council and its services visit www.hants.gov.uk



Basingstoke and Deane Borough Council is responsible for:

- local planning and development control
- street cleaning, household waste and recycling
- administering council tax and housing benefit locally
- managing the waiting list for social housing vacancies, homelessness prevention and promoting good quality housing
- environmental health and safety
- parking enforcement
- licensing
- promoting economic development and tourism
- providing parks and leisure facilities
- building control, local land charge searches and street naming and numbering.

1st Bramley Guides

This term at Guides has been a lot of fun and full of activities and adventures!

At the start of term, we made our own life-sized games including Monopoly and Frustration. The following week we made tie-dye shirts and bags which was messy, but they turned out really well!

In celebration of Pancake Day, we cooked our own, although they looked more like scrambled pancakes! After half term we did some up-cycling with clothes, making dresses out of plastic bags, newspapers and old clothes. Then, for Mother's Day, everyone invited a Mum or carer and we had a spa night. We made face masks, lip scrubs and bath bombs together and it was great bonding time.



Pancake Day



A few of the Guides bouldering

For our next meeting, we went to St James Church to try out bell ringing. It was brilliant fun and some of us were lifted off the ground. We also found out some interesting history about the church. Finally, we went climbing and bouldering which was really fun and good exercise.

This term was amazing, and we all can't wait for the next!

Daisy – Guide

SUMMER FETE

Saturday 18 May
12 to 4pm
Clift Meadow

One Mile Fun Run - All Ages!
Registration from 11:30

Fun Dog Show
Paw-Fect Family Fun 🐾🐾

Hamper Prize Draw
Bring your voucher

Cut Here

Name:
 Phone No:

PRIZE DRAW VOUCHER

For a warm friendly welcome

THE SHOP IN SHERFIELD ON LODDON

Selling a vast range of groceries including:

Bakery bread & cakes from Christmas family bakers

Market Fresh fruit and veg

Quality fresh meat, fish & poultry

Excellent selection of wine, beer, spirits & tobacco

All at competitive prices

Opening times
 Monday to Saturday 7.00am to 7.00pm
 Sunday 9.00am to 5.00pm

Orders Taken for delivery
Call 01256 882234



WATER SOFTENERS

AMS LTD

WATER SOFTENER REPAIRS

[ALL MAKES]

NO CALL OUT CHARGE, CAN FULLY RECONDITION WITH GUARANTEE.

NEW SOFTENERS SUPPLIED AND INSTALLED 10 YEARS GUARANTEE.

Email: infoamsmayfair.co.uk
Tel: 01256 768171/ 07836 247694

 **Elm Park Garden Centre**

www.elmparkgardencentre.co.uk

Tel 01256 850587

 Like and Share us on Facebook



Garden Furniture 🌸 Outdoor Living 🌿 BBQs
 Birdcare 🌿 Plants 🌿 Bedding 🌿 Seeds 🌿 Compost
 Pots 🌿 Hanging Baskets 🌿 Tools 🌿 Fencing
 Sheds 🌿 Garden Gift Vouchers 🌿 Coffee Shop

Aldermaston Road, Pamber End, Tadley RG26 5QW



Relax Renew Revive
 Beauty, Health & Wellness Therapies




the healingtouchway clinic 07577107798

www.thehealingtouchway.co.uk

27 Longbridge Road, Bramley RG265AN





Bramley Greening Campaign gets started

“We may feel powerless in the face of climate change, but if everyone in our community can make small changes to reduce the impact on the environment, then together we can achieve real change at a

local level. And beyond that, our 200 Greening Campaign Communities can achieve even more across the country.”

This was the message from Terena Plowright, founder and key speaker at Bramley’s Greening Campaign Public Meeting, hosted recently by Wilder Bramley. Individual residents and local groups came to support the campaign as Terena explained more and encouraged all participants to have their say on the next steps. Bramley is one of just 20 communities across Hampshire chosen to run the programme this year and we hope that the whole village will enjoy taking part in an exciting year of sustainability initiatives and events.

The programme is structured around five pillars and attendees were invited to read the display material around the hall before signing up to support the pillar that was closest to their hearts:

- **Space for Nature**
- **Energy Efficient Warmer Homes**
- **Cycle of the Seed**
- **Waste Prevention**
- **Health Impacts of Climate Change.**

Next steps

Through discussion and voting, two challenges per pillar were selected, that people felt our community would be able to support and carry out. Over the next few weeks, a small card displaying the challenges will be delivered by volunteers to each household in the village, for people to make the small changes that they feel able to do and then display the card in their window to show support. We are hoping for a forest of cards in windows! Following that, there will be a Launch Event kicking off a year of exciting Greening events that individuals and groups across the village will be able to take part in.



Traditional scything is a wildlife friendly way of mowing meadows

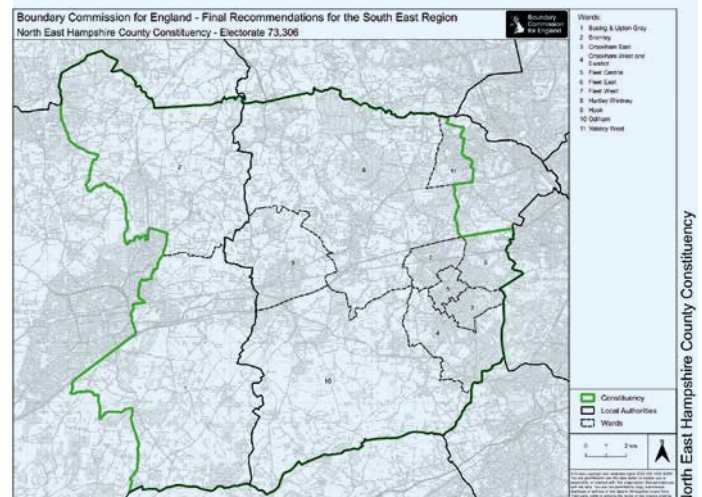
Scything

Some of us had hoped that Poldark might show up for our Wilder Bramley spring scything session at the wildflower meadows in St James’ churchyard and at Clift Meadow. Sadly, he did not, but much was achieved, nevertheless. Scything is traditional and wildlife friendly because it gives the little creatures living in the long grass time to escape. You can find all sorts of fungi, lizards and insects as you work. Two of our members were trained by a BCV volunteer and reported the quiet, rhythmic swishing to be quite enjoyably therapeutic. The long grasses were cut, then raked up to enable the sun and rain to reach wildflower seeds in the soil and to reduce the strength of competing meadow grasses.

If you enjoy and appreciate nature, why not head over to our Wilder Bramley Facebook page?

Parliamentary Boundary Changes

A reminder that new boundaries take effect at the next General Election. The notable changes to this part of the County are that Little London, Tadley and the Pambers become part of North West Hampshire as do Monk Sherborne, Sherborne St John and Chineham. The current MP for North West Hampshire is Kit Malthouse. The boundaries for the County Council Division of Calleva remain unchanged.



Last month we learnt about St James and the St James Cross. This month, **Grahame Mellor** tells us about the **St James Way** and we find out more about the panels that are being made to celebrate **St James' Day in July**

Some of you may have heard of the Camino de Santiago, or the Way of St James, which is a pilgrimage route leading to the shrine of St James in the cathedral of Santiago de Compostela in Spain. Santiago means Saint (Sant) James (Iago). It was one of the most important pilgrimage routes in medieval times and has seen a revival recently with over 400,000 walking the route each year. In addition to those undertaking a religious pilgrimage, many are hikers who walk the route for travel or sport. The photograph (left) shows the shrine of St James and was taken by local resident, Malcolm Bell, when he visited Santiago last year.



For those who want to start their walk in England, the Confraternity of St James have created a pilgrimage route in honour of St James, from the majestic ruins of Reading Abbey to Southampton, a port from which pilgrims would have embarked on their onward journey to Santiago. Known as the St James Way, it is 66 miles long and takes around 6-7 days to walk. Passing through the rolling countryside and open downs at the heart of the kingdom of Wessex, the route presents no particular physical issues for a pilgrim apart from the distance. Along the route you walk along rivers and canals and find village churches (often dedicated to St James), riverside pubs and other historic places. The route follows the old Roman road from the remains of Silchester Roman City via the medieval wall paintings at Bramley, then Basingstoke to Winchester Cathedral, and finally on to Southampton.



Whilst writing this part I was interested to learn how and when these pilgrim walks were organised, so I am very grateful to Rev Mark Anderson for his explanation:
"Pilgrims are encouraged to walk all, or part of the St James Way and they do so throughout the year - the summer being a more popular time. Some walk on their own, others in groups - the largest I've seen in Bramley is 20 people. People pause at St James Church to admire its beauty and history and I often ask where they have come from and where they are going. Some do the whole of the Reading to Southampton way and some have done or will do the pilgrimage to Spain too. Walkers will often do part of the Reading to Southampton route on one day, then go home and at another time, restart their walk where they left it. As they leave, we say "Buen Camino" which is the Spanish for 'good road' but it can also mean good path: both physical and spiritual. It is the greeting shared by pilgrims and walkers on the Camino and with anyone they meet on their way."

Just after leaving Cross House in February, we were fortunate to meet Kelly & Brendan Flaherty of Oxford who were walking the St. James Way in memory of their son Joseph Timothy.



Marking St James Patronal Festival

This year St. James Church, Bramley, has decided to recognise and celebrate our Saint's feast day with a number of events between 25th and 27th July.

A group of people from Sherfield and Bramley are designing, creating and sewing 12 decorated panels that depict Christian symbols, and those of St James and the Church.

These creative works will be on show in church on 25th, 26th and 27th July from 10.30am to 4pm, with refreshments being available in Cross House. Proceeds will go towards St. James' Church funds. We will also welcome the Bishop of Winchester who will be taking Sunday morning services on 28th July.



A dedicated team creating 12 amazing panels



Ileen, Dusty and Sue selecting suitable fabrics



Helping each other to finish the panels



Deirdre hand sewing the finer detail



Judith, Caroline and Jacky helping each other with their projects



Deirdre hand sewing the finer detail

An amazing amount of time, expertise, creativity and sheer hard work has gone into creating these exquisite panels to such a high standard.

Please do come along to St James on our open days to see these amazing panels, meet the artists, enjoy some refreshments and make new friends at our lovely church. You may even meet a pilgrim, so remember to say "Buen Camino!"

Grahame Mellor

The Show Can Go On!

After a very troubling few weeks, where the future of the Bramley Show was in doubt, the committee is delighted to announce that the Bramley Parish Council has seen the importance of this Show by giving us the much-needed funds so we can continue planning for this event. A lot of work goes into the planning of such shows, and arrangements are well under way to provide an interesting and fun afternoon on **Sunday 15th September**.

As part of a money saving exercise, the original website is closing and the show pages can now be found on the Bramley Village Hub website, www.bramleyvillagehub.com where the schedule and entry forms can be read and downloaded if required. The Facebook page will be updated regularly so please keep an eye on this as well.

A show does depend on entries so please take a look at the schedule to see what categories you could enter. There are the old favourites plus a few new ones, including the Best Decorated Teapot. Let your imagination run wild!

Please remember the new entry fees for adults is 50p per class. This means each adult will be sponsoring a children's entry as children's entries are free. What better way to encourage the next generation to take pride in these traditions and carry them on.



We will be at the Clift Meadow Fete on Saturday 18th May 12 – 4pm, with some plants for sale and some craft items, all there to give you ideas for entering. All money raised will add to the funds so we can continue the show next year. We look forward to seeing you there.

Timetable for the show:

- 8.30 - 10.30am - Staging of Exhibits
- 10.45am - Judging Commences
- 13.00pm - Open to the public
- 15.30am - Prize Giving, Raffle and Sale

Craft Sale and teas served all afternoon

Guidelines

The Chapman Cup will be awarded to the overall winner. Other cups and prizes will be awarded for some classes.

Sections: Flower (section split into annuals, perennials, dahlias and potted plants), Vegetables, Fruits, Floral Art, Craft, Photography, Art painting or drawing, Cookery, Best decorated teapot, Junior section, Junior potato growing competition

To apply to take part or for full details please visit - <https://www.bramleyvillagehub.com/the-bramley-show>.

As we head into the summer term, Little Apples have been thinking about the transition to school for those children leaving to start school in September

So, what is 'school readiness'?

School readiness is a term which has many different interpretations. This may lead to confusion and then concern as to whether a child is ready for school.



Our growing project encourages curiosity and active learning

A traditional view may focus on a certain level of skills with reading, writing and numeracy for school readiness, whereas a teacher in a reception classroom may prioritise an ability to sit and listen! In early years, we would consider school readiness to be related to communication skills and personal, social, emotional and physical development.

At Little Apples, our key priorities can be summarised as:

1) Helping children be able to communicate their needs and ideas

This is promoted through offering a language rich environment with ongoing meaningful interactions. Sharing quality books, as discussed in our previous two magazine articles, is also key to this and it is recommended that preschool children hear a minimum of five books a day. At Little Apples, a language and listening group supports children who need extra help in this area and if children have limited speaking skills, we will have already liaised with parents about additional support.

2) Helping children build skills to enable them to play, cooperate and interact in groups.

This helps develop the important communication skills and enables them to engage in group learning activities. It also enables children to make friends. We provide open ended activities that the children can engage in with the other children to develop these skills. These activities are also designed to encourage curiosity about the world and a desire to explore and find things out. This helps children to move forward in their own learning and become more independent learners.

3) Ensuring children have basic self-help skills

Having the ability to care for themselves, for example, going to the toilet entirely independently, will greatly contribute to self-confidence and children's ability to settle in to school. We encourage development of gross and fine motor skills through indoor and outdoor play opportunities and encourage independence with praise and positive reinforcement.

This is a very brief overview of a complex topic, and obviously families, parents and school have huge contributions to make too. Please do get in touch if we can be any help.

Little Apples accepts children from two years old, including those qualifying for two-year-old funding and 30 hours funding. You can use your funded hours for any of our hours and sessions. You can call us on (07598) 588460 to arrange an appointment to visit or email manager@littleapples.org – please get in touch with any questions.

Clift Surgery and the Patient Participation Group

Covid Spring boosters will be available at the surgery in April/May (dates to be confirmed) so if you are eligible, you will be contacted and invited to make an appointment.

Have you had your shingles vaccination? Check on the website to see if you are eligible and contact the surgery to arrange this. www.nhs.uk/vaccinations/shingles-vaccine/.

The number of missed appointments is still disappointing. In March the number missed was **95**. If you no longer want or need an appointment, please contact the surgery so these appointments can be released and given to those who really need them. It also costs the surgery money when appointments are missed.

From the PPG

We are delighted to let you know that the car park has had a facelift with new signage at the entrance and newly painted lines. We wish to thank the Bramley Parish Council for supporting this initiative. There are 16 spaces which are now wider, the number of doctors' spaces are reduced to 3 and there are now 3 accessible spaces for those who are disabled, for parents who need to open a door wide, to get out child seats etc and for those who have mobility problems and need space to open a door fully. Please be respectful of these spaces.



Best of Flooring

Best of Flooring are an established Premium flooring company based in Hampshire

We have an extensive stock of top brands, viewable in our purpose-built showroom in Basingstoke

We can not only supply, but expertly install flooring of all variations in your home. Our team of highly experienced installers will offer you peace of mind from start to finish.

www.bestofflooring.co.uk
01256 810327

Checkatrade Where reputation matters

Trading Standards Approved
buywithconfidence.gov.uk

Showroom opening times:
Thurs/Friday 10-4 or call for an appointment.

Unit 3, Cufaude Business Park, Cufaude Lane, Bramley RG26 5DL

amtico flooring QUICK-STEP Kährs QUALITY IN WOOD SINCE 1857 Atkinson & Kirby

MOBILE SPORTS THERAPY BUSINESS

New to the area!

**Injury Assessment
Injury Treatment
Sports Massage**

07968509527

saunderssportperformance@gmail.com

www.saunderssportperformance.co.uk

Butter Daisy Nursery

Spring has officially arrived, and the April showers have certainly settled in. As dreary as the grey skies can be, the spontaneity has kept us on our toes and our Jubilee tree is certainly thriving and bursting with colour.

As we hopped out of March and into April, with a fantastic Easter to join the two, the children participated in a variety of fun-filled exciting activities to celebrate this international festival. They particularly liked hunting for Easter eggs in and around the nursery and making cards for their families. They also enjoyed a tasty hot cross bun with delicious fruit for a snack, as we reflected delicately and age appropriately on the cultural roots of Easter time.

Our Pre-School role play area has transformed this month into a popular potting station. The children have been experimenting with planting a variety of seeds and have placed them on the window for observation. We are already seeing so many wonderful plants taking root! The children are leading their play,



and have decorated their potting station with drawings of flowers and a variety of fruits and vegetables too - all the plants they predict will grow from their experiment. And while they wait, they are pretending to sell crops and flowers to one another and have also been pretending to cook with their imaginary plant foods. Additionally, they are continuing to play schematically with the tools and soil for open ended discovery.

Meanwhile, in the Baby and Toddler Suites, children have been fully engrossed in imaginative based activities surrounding this month's national and international celebrations mirroring their current interests, such as 'International Children's Book Day' and 'National Pet Day'.

If you would like to hear more about Butter Daisy Nursery, please do not hesitate to contact us on 01256 882515 or email butter@mydaisynursery.com.



Saturday 8th June 12pm - 5pm



Proudly supporting:
Local groups including
Sherfield Village Hall
and St Leonards's Church,
together with ...



This year featuring...

- Renowned Medieval Combat Society - Sword arena combat displays & Medieval village crafts & Archery
- 'School's Out' Sherfield School displays
- Traditional races for children & families
- Basing Clog Morris
- Royal British Legion Corps of Drums
- Petite School of Dancing

Refreshments

- Our own BBQ, Tea & Prosecco Tent & Beer Tent
- Nachos and Pizza
- Tacos and Quesadillas
- Candyfloss and Slushies
- Veggie/Vegan fare
- Coffee and Waffles
- Ice Cream



And lots more ...

- Companion Dog show
- Tavern's Tug o' War
- Petting animals
- Classic Wheels
- 'Rockin' on the Green' with Rellix
- Soft toy Tombola

- Thistledew Folk Duo
- Peter Bingham's Equinox Jazz Band
- Inflatables and rides
- Amazing Grand Raffle
- Village, Commerical and Charity stalls
- Juggling Jake's FREE circus skills



Bramley and Romans Flower Club

April’s meeting of the Bramley and Romans Flower Club was a workshop to create a parallel design, with an added element, as the aim was to not only create an arrangement of flowers but also to construct the mechanics to support the flowers. This proved quite a challenge, but everyone persevered and achieved a great degree of success as the photos below attest.

The workshop was led by Jane Belcher, who is a teacher from the BBO (Berks, Bucks and Oxon) area of NAFAS (National Association of Flower Arrangement Societies). Jane has won several awards at RHS Chelsea including Gold and Best in Show, so we were in very good hands. The Royal Horticultural Society and NAFAS are trying to discourage the use of floral foam as it takes a very long time to degrade, so more environmentally friendly alternatives are constantly being sought for demonstrators and flower arrangers alike. Jane has devised a wire mesh cage-like construction which seems to be an ideal substitute for foam and almost as versatile. The only disadvantage is that it does take a little while to make, but once made it has the advantage that it can be used many times. She showed us how to cut out the mesh and construct the fairly complicated design and for some time afterwards the only sound to be heard was the snipping of over 40 wire cutters as members concentrated on cutting and bending the mesh into shape.

During a welcome break, we enjoyed tea and cake, after which Jane demonstrated the best way to insert flowers into the frame to create a parallel design. She made two wonderful examples. One used pussy willow, mauve

lisianthus, clematis and yellow carnation, while the other included dark red tulips, euphorbia, anemones and arum leaves. Members used a wide variety of flowers and foliage, which included roses, daffodils, iris, stocks and alstroemeria. When all of the arrangements were displayed together on long tables at the end of the afternoon, they looked truly stunning and despite a few sore fingers, everyone agreed that it was a very enjoyable afternoon.

A special thank you to Stephanie Cornell, who cut out squares of mesh for over 40 participants and provided other mechanics, and to the rest of the committee for organising a fun afternoon for all.

New members and visitors are always welcome whether we are running a workshop or our usual demonstration. Do come along for an afternoon of friendly company and flowers. The club meets on the first Thursday of the month at Sherfield on Loddon Village Hall at 1:30 pm. The cost for visitors is £7. For more information, please visit our Facebook page or contact Dusty on 01256 881420 or via email: TayMab1@aol.com.



ALL ASPECTS OF PEST CONTROL WORK UNDERTAKEN

One Off Treatments & Ongoing Pest Management Programmes Available

- ✓ Fully Insured ✓ All Staff DBS Checked
- ✓ Professional & Friendly BPCA Qualified Staff
- ✓ All staff use Non Sign Written Vehicles. Discreet Service

OUR SERVICES

Residential & Commercial Properties Serviced.

- Rat and Mouse Treatments.
- Wasp and Hornet Nest Treatments & Removal.
- Traditional Mole Catching Specialists.
- Cluster Fly Treatments.
- Clothes Moth Fumigation & Management.
- Bed Bug & Flea Treatments.
- Pest Proofing Work.
- Rodent, Insect & Bird Control.
- Wildlife Management.

CONTACT US HEAD OFFICE: (01256) 643481 LOCAL OPERATOR: 07718986858

Bramley SpeedWatch

There is a camera!

Many of you will have noticed the speed camera by the Village Hall. It has been in operation since 16th March. The Police have direct access to the information collected by the camera. The camera trigger and reporting speed are set at: =>35mph.

Some initial observations:

- There are a lot of vehicles risking a £1000 fine for having a dirty number plate.
- Approximately 2.5% of vehicles are showing on the DVLA register as being without a valid Tax, MoT or are registered as SORN.
- The fastest hour is 3-4pm.
- The number of vehicles speeding is excessive. If the camera was a highways camera, it would have collected more than £125,000 in its first part month of operation.

Table 1: Camera Data*

Month/Year	Verified Speeders =>35mph	Max Speed Recorded	Illegal Vehicles (No Tax Mot or SORNeD)	Highest number of offences committed by one vehicle	Fastest Hour
March 2024 (part)	1258	59mph	31	9	3-4pm

*Part data as currently unable to download data due to the manufacturer stopping support for the software.

Recent Local SpeedWatch Activity:

3 manned deployments were undertaken during March. A total of 43 vehicles were reported to the Police from the 431 vehicles checked - hit rate 10%. The top speed recorded was 46mph.

Speed Indicator Device (SID) Data:

The SIDs were in full use throughout March, see Table 2 for Data. If anybody would like traffic speed monitored in a specific locality, please let us know via

bramleyspeedwatch@yahoo.com.

If you have any question/concerns regarding SpeedWatch please email:

bramleyspeedwatch@yahoo.com
speedwatch@hampshire.pnn.police.uk
or visit:
www.hampshire.police.uk

Keep Safe and Watch Your Speed
Graham White, Bramley SpeedWatch Co-ordinator

Table 2: SID Data (March)*

SID Location	Days deployed	Traffic direction	% Exceeding 30mph	No. exceeding 60 mph	Max speed recorded	V85*	Average speed
Farriers	10	West Bound	50%	0	57	36	31
The Street Village Hall	10	East Bound	38%	7	66	34	30

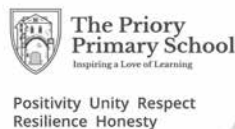
*Part data as currently unable to download data due to the manufacturer stopping support for the software.

PRIORY PRIMARY SCHOOL GOVERNOR

The Priory Primary School is a small academy primary school situated in the picturesque hamlet of Pamber End, North Hampshire. We have around 190 children across seven classes with children entering in the year they become five and leaving at the age of eleven. The school strives to create a happy, stimulating environment where children love to learn, and prides itself on providing an excellent education for all, offering a wealth of opportunities that enable children to develop key skills that will last them a lifetime.

The Governing Board are seeking experienced individuals to join the team. If you are a driven individual with expertise in one of the following fields, we would be delighted to hear from you:

- Finance & Accounting
- Business & Marketing
- Leading in the Education sector
- Safeguarding & Child Protection
- HR or Health & Safety



EXPECTATIONS OF THE ROLE

Governors are concerned with the strategic aims and objectives of the school, helping to set targets and monitor progress towards these aims. Governors shape and review school policies, ensuring relevant compliance, providing effective support and challenge to the Headteacher.

To achieve this, school governors require interpersonal skills, and the ability to uphold confidentiality and self-evaluate. A governor does not need to be an expert in all areas of governance but will take responsibility for a key area of professional expertise. Relevant training will be provided, in addition to attending at least 6 Full Governing Board meetings per academic year - these are a mix of online and face to face meetings. There is also an expectation of two governor visits a year, linked to the school

strategic plan. The governor role is a voluntary role.

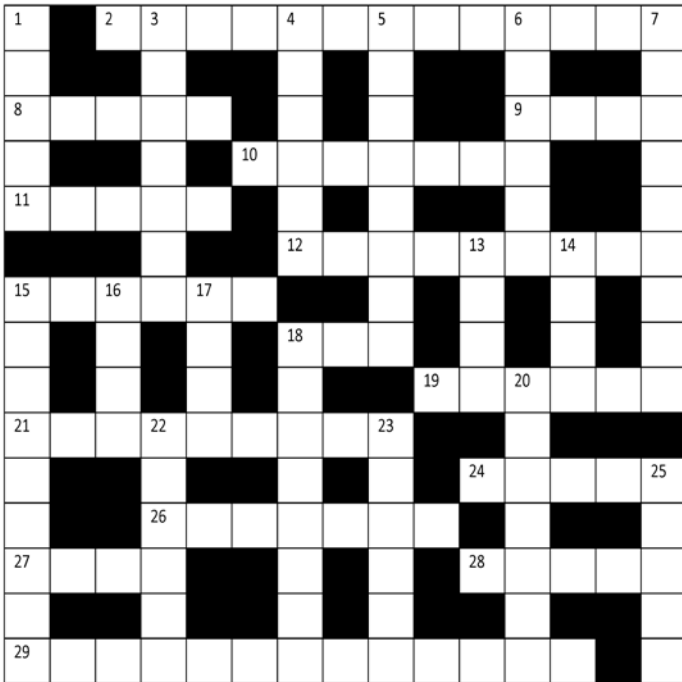
Being a school governor is a commitment and a responsibility but offers you the opportunity to see first-hand the impact you can make in improving and contributing to the children in your community, also giving you exposure to other areas of school governance that may not be of personal expertise, offering personal growth and being involved in key decisions.

NEXT STEPS:

If you would like more information about this advert, please email our Clerk to Governors, Nickie: hampshire.clerk@hotmail.com. Please note that all prospective governors will be required to complete an application form including providing references. All applicants also undergo safer recruitment checks, including DBS checks, prior to being appointed.

Cryptic Crossword No: 78

See page 26 for the answers.



Across

- 2 Angry bovine complaint perhaps ? (3,3,7)
- 8 Scent started a rather obviously made arrangement. (5)
- 9 Peter is learning to conceal a small place. (4)
- 10 Berkshire town for learning perhaps. (7)
- 11 Beginner's level or access. (5)
- 12 Let late rat be cureable. (9)
- 15 Logic allows him to hide his being naïve. (6)
- 18 Structure sounds like a curse. (3)
- 19 Did Bud and Chesney sing underneath these. (6)
- 21 Someone on stage perhaps. (9)
- 24 Beatles road for religious community building. (5)
- 26 Essential doctor's manner. (7)
- 27 Duck, not the lowest score. (4)
- 28 Alter range to create wrath. (5)
- 29 Changes again learns around fair sounding intent. (13)

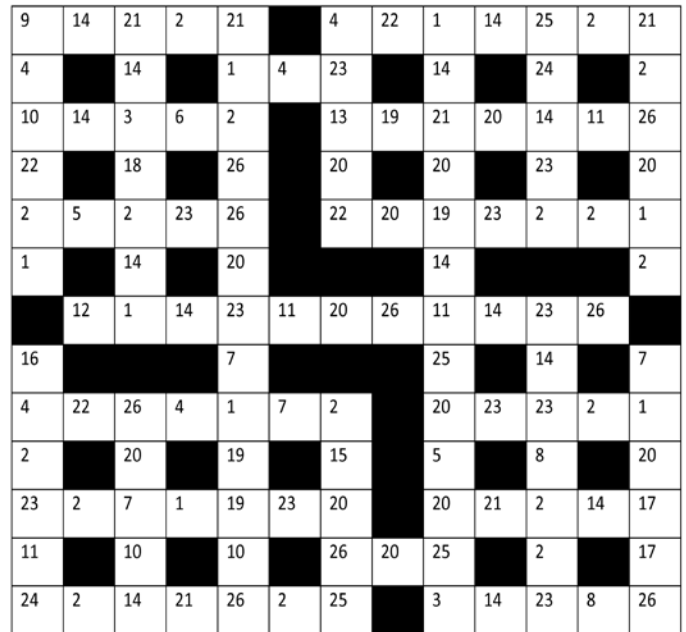
Down

- 1 Saying a dark art gets extraordinary beginnings. (5)
- 3 Naval rank laid arm out. (7)

- 4 Voice an opinion or something. (6)
- 5 Indulgence not done at night. (8)
- 6 Puzzle for Turin perhaps. (6)
- 7 Flower, subject of Hammersteins last song. (9)
- 13 Drop or rip. (4)
- 14 Wombat hides washing vessel. (4)
- 15 Carpet around pole, hesitant sound for tradesman. (9)
- 16 Make of jet or king. (4)
- 17 Palendromic german. (4)
- 18 Capital city as swearing broadcast around. (8)
- 20 Piece of furniture or group of politicians. (7)
- 22 Began finding a bear looking extraordinarily dozy, it was legendary. (6)
- 23 Radioactive metal made from mud and air. (6)
- 25 Lengths that follow hard sometimes. (5)

CodeWord No: 64

See page 26 for the answers.



Each number represents a unique letter from the alphabet and all 26 letters are used. Two letters are given to make a start.

Spencer & Peyton
Established 1961

3rd Generation family owned and run
Funeral Directors and Monumental Masons

24 Hours

Our family serving your family for over 60 years

380 Worting Road, Basingstoke, RG22 5DZ
01256 323165
The Flower Girl florist on site

7 London Road, Hook, RG27 9DY
01256 761717

Trading Standards approved

funerals@spencerandpeyton.co.uk
www.spencerandpeyton.co.uk

Jane's Reflexology & Reiki Healing

Jane Parsons
07815 042475

Bespoke Treatments offered
In the comfort of your own home
Or in my home therapy room

Gift Vouchers Available

janep6864@gmail.com

Gigaclear
Faster broadband for rural Britain

UP TO
15x
FASTER
THAN
STANDARD FIBRE

FULL FIBRE BROADBAND IS COMING SOON



Bringing faster speeds to rural villages and towns.

Upgrade to 100% full fibre broadband and video call, browse, stream and game to your hearts content.



Choose your perfect broadband package at **gigaclear.com** or call **0370 224 8918**

Gigaclear and the Gigaclear logo are UK registered trademarks of Gigaclear Limited.

Phillips Law

Can I take my child on holiday if the other parent objects?



Legal@phillips-law.co.uk
01256 460830

This is a question we are often asked when holiday plans are being made for the summer. The issue for taking a child abroad for a holiday can often be a cause of conflict between separated parents.

If the "Lives With" Order is in your favour then you can take your child abroad for up to 28 days as long as there are no other court orders prohibiting this or setting out a different amount of time you can take them out of the country for.

What if the holiday has been booked and paid for?

For parents who have previously been able to agree on matters among themselves without requiring legal intervention, the other parent would still have a right of veto over a holiday abroad. This is even if the holiday has been booked and paid for.

In practice, the Court will consider what is in the best interest of the child if parents cannot agree and can make an order about whether they can or cannot go on a particular holiday. If the holiday is

soon you would have to seek an urgent hearing, and this is not always simple.

If the holiday was originally agreed, prior to booking, and the other side subsequently withdraw their consent, to the child/ren going on the trip, without a legitimate reason, then on applying to the court you could also seek your costs back from the other side if the court allows the children to go on the holiday.

The Court will take into consideration issues such as the wishes and feelings of the child concerned and their educational and emotional needs.

Under normal circumstances, the Court will take a view that a holiday for a child is a good thing to be enjoyed.

We are here to help you

At Phillips, we will listen to your concerns and discuss your options, letting you know what your rights are, as well as those of your former partner.

For more information, please contact our Family Law team by calling 01256 460830 or by visiting www.phillips-law.co.uk/family

Disclaimer: This article is current at the date of publication set out above and is for reference purposes only. It does not constitute legal advice and should not be relied on as such. Specific legal advice about your specific circumstances should always be sought separately before taking any action.

Cross House

These excellent church rooms are available for private hire



Ideal for functions such as birthday parties, baptism teas, keep-fit classes, presentations, wedding receptions, boardroom meetings and classes of various sizes.

Large Hall, main meeting room, further rooms, fully equipped kitchen, Wi-fi.

For further details or to book ring Steve Day on 07341 552732 or email crosshousebramley@gmail.com

ROLLER GARAGE DOORS CENTRE



Roller Garage Doors - Sectional Garage Doors Up & Overs - Service & Repairs

- FREE no obligation survey & quotations
- 28 years plus experience
- Huge range of colours and style
- Own professional installation teams
- Secured by Design
- British Built
- FREE 7-year motor warranty
- Showroom at Head Office



Tel: 01256 962 660
www.rollergaragedoorscentre.co.uk
info@rollergaragedoorscentre.co.uk

Proud members of
Checkatrade.com
Where reputation matters

John Stubbs provides a brief history of our hedgerows, in this month's **Beautiful Bramley**

Hedges? They've always just sort of sat there, haven't they? Not so, of course; on a longish timescale, they've come and gone, they've been grown and ploughed over, valued and disparaged, loved, shifted, neglected, and argued over since the Bronze Age, and probably longer. This shot is pretty typical of the countryside around here; no apparent logic in the shapes, sizes or positions of the fields, but it's all much more complicated, intricate and random than you'd guess from driving by.

Earlier this year, the UK Centre for Ecology & Hydrology released a report on their unprecedented survey of the nation's hedgerows, using aerial laser scanning to collect data on hedgerows between one and six metres in height. The trouble is that it's going to be very difficult to quantify any prior changes, as there's never been such a comprehensive or accurate survey, but it'll be an important guide for the future. In England, we now know that there's a total length of some 390,000 km of agricultural hedgerow. In Hampshire there's an average of 1.5km of hedging in each kilometre square of rural land, one of the least in the country – Cornwall boasts around three times as much.

Estimates of the extent of hedges in the past, compiled from much more modest ground-based surveys, indicated that 'peak-hedge' occurred in the late 1940s, since when there was a strong push towards rooting out hedges to allow larger fields, more easily worked by the reduced labour availability in the countryside and increasing mechanisation. The reduction probably removed nearly half the total amount of hedging, slowing in the 1990s as recognition of the benefits of hedgerows increased and legislation caught up. The catalogue of these less-seen benefits is really quite extensive, comprising factors such as reducing flood damage, reduction of pollution, storing significant amounts of carbon, giving shelter and habitat for pollinators, reservoirs of essential fungi, and soil stability. The more evident functions of hedges are the control of livestock, property



boundaries, windbreaks, security, wildlife corridors and birdlife.

There's a lot more to hedging than just letting scrub grow up around a field. It does depend on the main purpose of the hedge, but one cut to below a metre in height is less likely to be very useful to wildlife. In rural settings, a bit of loftier growth allows berries, nuts and flowering, safer nesting and greater variety of species: these are the essence of a good hedge. Native species are much favoured for birds and insects: good maintenance avoids long hedge-gaps; a bank, stream or footpath provides stability and a range of habitat. Trees such as the hawthorn need a second year for fruiting, so cutting needs to be planned: a two- or three-year cycle is now recommended, and some fruiting trees and shrubs are best left uncut in the autumn, where it's important to leave food for winter foragers.

Historically, Bramley's hedges and boundaries were probably most influenced by the manorial estates – Beaurepaire, The Vyne, and Stratfield Saye would have been established way back, and enclosed land traditionally farmed by the tenants. The Oxford Colleges would also have had a say, as major landowners around here. During the eighteenth and nineteenth centuries, the Enclosures Acts pretty much finished off the Saxon open-field working, fundamentally changing the

working patterns whereby farmers worked common-land in strips, according to local tradition and the accepted rotation of crops. Landowners made much of 'The Tragedy of the Commons', a proposition taking it for granted that if people had unrestricted use of common grazing land, it would be stripped bare by opportunists. In fact, there wasn't much evidence of this; common-land management had worked for centuries. However, various factors combined to promote land enclosure, increasing the need for boundaries and hedges, though causing of much discontent among those displaced.

The present-day hazards to hedgerows are no longer Levellers, the 17th C. protesters pulling up hedging and filling in ditches, nor do we have the post-WWII drive for bigger fields and more land under the plough. The benefits of hedgerows and field margins are listed by the dozen and favoured by both legislation and subsidy. So, hedge losses in the future may be less of a problem. We've still got a whole lot of ancient hedgerows, something to be much valued. The unique patterns of fields that can be seen all round us are a link to feudal politics and farming practice over millennia – worth taking a look, if you see a gap in the hedge.

Festival of Transport 2024

We need your help on the day - have fun volunteering with us and help our local community.



There is a team of almost 100 that help at the Festival of Transport. To get involved, please contact Paul Temple (details below), whether just for a couple of hours, half day or all day.



Contacts:

Helen Ricketts:
 helen@highpathway.co.uk
 Paul Temple:
 tempaul45@gmail.com
 www.rcbd.org.uk



Basingstoke Deane Rotary is a group of 27 men & women from a wide variety of backgrounds. All live locally in the borough but some commute to work outside Basingstoke. Most joined Rotary to help others less fortunate, and they find Basingstoke Deane Rotary adds another extremely enjoyable dimension to their lives.

If you would like to find out more about how we enjoy ourselves, just tune in to www.rcbd.org.uk to see what we have coming up, or contact Helen or Paul to find out more. We think you'll be pleasantly surprised.

Facebook: @RotaryBasingstokeDeane
 Twitter: @RBstokeDeane

Basingstoke Deane
Rotary
 Present

**BASINGSTOKE
 FESTIVAL OF TRANSPORT**

SUNDAY 19 MAY 2024

**SHOW OPENS AT 11.00 am
 FREE ENTRY**

**CAR PARKING £5 PER CAR
 ACCESS FROM LONDON ROAD, RG21 4BY**

VEHICLE DISPLAYS, STALLS AND OTHER ATTRACTIONS
 FOOD SERVED ALL DAY

**WAR MEMORIAL PARK
 Basingstoke**

Visit - www.bstokefot.co.uk

Let me inspire you...

I'm an Independent Travel Agent & Tour Operator specialising in affordable luxury. Bucket-list adventures, family holidays, city breaks, cruises, safari's, honeymoons...any trip, large or small. Offering a stress-free personal service and 100% financial protection – try me!

Karina Palmer

TRAVEL COUNSELLOR
 01256 220 095 or 07539 772887
karina.palmer@travelcounsellors.com
travelcounsellors.com/karina.palmer

Trustpilot

QUALITY BUILDING SERVICES IN BASINGSTOKE

We are a specialist builder, based in Basingstoke and covering the North Hampshire area, with decades of specialist expertise in full project management of building work, home extensions, garage conversions, garden rooms, structural alterations, kitchen installations, home refurbishments, bathrooms, loft rooms, and landscaping.



LOOKING FOR INSPIRATION?



CONTACT US

07739843228

sales@fieldandfield.co.uk

BASINGSTOKE CIVIL SERVICE RETIREMENT FELLOWSHIP

There were 48 members at the meeting held on 3rd April. The Secretary, Tony Brazier, gave a reminder of the forthcoming trip to Arundel Castle on 18th April, the visit to Savill gardens on 23rd May and afternoon tea at BCOT on 20th June. The Welfare Officer, Christine Broadbent, said that she had been in touch with members who were not well, and the Chairman thanked her for all the hard work that she does.

Our speaker this month was Daniel Cowling who is Headteacher at Oak Wood School in Hillingdon and had previously visited us to tell us about the challenges faced in turning round a failing school. This time he spoke about not only the challenges facing leaders in education, but in any environment where priorities and expectations were constantly being changed due to political pressures or changing due to other factors. He told us about those that had inspired him and gave examples of the ideals that they, and him, had aspired to in trying to be a good leader. Above all, he emphasised the need to do the best possible in any given situation and to listen and learn, while being always compassionate when dealing with other people, whatever the circumstances.

Our next meeting is on 1st May when our guest speaker will be a representative from Thrive, The Gardening for Health Charity, to talk about their work.

The group meets on the first Wednesday of the month at the Brookvale Village Hall from 10am to 12 noon. All

retired Civil Servants and their relatives and friends are welcome. Further details about the group and information about the meetings and trips can be obtained by contacting csrfbasingstoke@gmail.com or 07715 640171.

David Cowling



Community minibus offers free transport to The Vyne

National Trust's The Vyne is offering visitors a free monthly shuttle service from Basingstoke Train Station to The Vyne, in partnership with Basingstoke Community Transport. Affectionately named the 'Vyne Line', this service which features a 16-seater, fully accessible minibus will run on the last Wednesday of the month from April until October 2024.

Commenting on the initiative, a spokesperson from The Vyne has said 'The Vyne Line community minibus is a fantastic opportunity to help reduce traffic on the roads and promote accessibility to natural spaces for everyone. We're hoping to get plenty of bookings and if this is popular, we can then look into extending the service.'

Those looking to use the Vyne Line will need to pre-book their free seat by phoning 07967 875832. There's no need to pre-book entry to The Vyne, but visitors will need to pay normal admission on entry. National Trust members get in for free. The outbound journey departs from Basingstoke Train Station at 10am, arriving at The Vyne at 10.20am. The return journey departs from The Vyne at 2pm, arriving at Basingstoke Train Station at 2.30pm.

The service will run on:

- 24 April • 29 May • 26 June • 31 July • 28 August
- 25 September • 30 October

More information can be found at nationaltrust.org.uk/the-vyne.



BAUGHURST
**Repair
Cafe**

www.baughurstrc.uk



We are a Community Action Group run by volunteers

Don't Bin it. Repair it!

**Can't repair your own stuff easily anymore?
Let us help you...see what we can repair**

Electrical and Electronics # Bicycles
 Wooden Furniture # Costume Jewellery
 IT Equipment # Textiles # Soft Toys
 Tool Sharpening
 Ultrasonic Cleaning
 Mobile Phone Advice / Troubleshooting
 IT Advice / Troubleshooting

Every 3rd Sunday of the Month
from 10am till 1pm

At Heath End Village Hall (RG26 5LU)
 To book an item for repair, please email
baughurstrepaircafe@hotmail.com or click on the
 QR code above or just turn up. Thank you.

Mondays	
<i>Badminton</i>	Village Hall
<i>Petite Dance</i>	Village Hall
<i>Hipp Pilates</i>	Clift Meadow Pavilion
<i>NHS Heath Visitor</i>	Village Hall
<i>Pilates 9am</i>	Clift Meadow Pavilion
<i>Pregnancy Yoga with Sam 6pm</i>	Clift Meadow Pavilion
<i>Yoga with Sam 7.30pm</i>	Clift Meadow Pavilion
<i>Classical Pilates, 6.45-7.45pm</i>	Village Hall
<i>Cubs 6.30-8pm</i>	Brocas Hall
<i>Trail Runners 7.30pm</i>	Clift Meadow car park

Tuesdays	
<i>Parish Council Meetings 3rd Tuesday of the month</i>	Bramley Room, Village Hall
<i>Badminton</i>	Village Hall
<i>Bell Ringing 8pm</i>	St James's Church
<i>Petite Dance</i>	Village Hall
<i>Short Mat Bowls</i>	Village Hall
<i>WG Pilates 9.15 – 10.15am</i>	Cross House
<i>Pilates 9.30am</i>	Brocas Hall
<i>Body Control Pilates 9.30-10.30am</i>	Village Hall
<i>Bramley 0-5s 10am – 11.30 am</i>	Clift Meadow Pavilion
<i>Beavers 5.45pm – 6.45pm</i>	Brocas Hall
<i>WG Pilates 6.45 – 7.45pm</i>	Cross House
<i>Scouts 7-8.30pm</i>	Brocas Hall
<i>Hipp Pilates 7-9pm</i>	Clift Meadow Pavilion
<i>Table Tennis – 7pm</i>	St Stephen's Hall, Little London

Wednesdays	
<i>1st Bramley Brownies</i>	Village Hall
<i>1st Bramley Rainbows</i>	Village Hall
<i>Wednesday Club 10am to midday</i>	St Stephen's Hall
<i>1st Bramley Guides</i>	Village Hall
<i>WG Pilates 9.15 – 10.15am</i>	Cross House
<i>Bramley Tea and Coffee morning 10-11.30am</i>	Clift Meadow Community Cafe
<i>Squirrels 5-6pm</i>	Brocas Hall
<i>Pilates 7-8pm</i>	Clift Meadow Pavilion

<i>Trail Runners 7.30pm</i>	Clift Meadow car park
Thursdays	
<i>Bramley & Romans Floral Society 1st Thursday</i>	Sherfield on Loddon Village Hall
<i>Dance Club</i>	Primary School Hall
<i>NHS Heath Visitor</i>	Village Hall
<i>Pilates</i>	St Stephen's Hall
<i>WI 2nd Thursday</i>	Village Hall
<i>Friendship Walks, 10.30</i>	Clift Meadow Pavilion
<i>Lynden School of Dance & Gymnastics 3.30 to 7.15pm</i>	Brocas Hall
<i>Perform 5.45pm</i>	Clift Meadow Pavilion
<i>Hatha Yoga 6.30-7.30pm</i>	Cross House
<i>Classical Pilates - 6.30-7.30pm</i>	Village Hall
<i>Walking 4 Fitness & Friendship 6.40 for 6.45pm (April-Sept)</i>	Clift Meadow car park
<i>Petite Dance</i>	Village Hall
<i>Hipp Pilates 7-8pm</i>	Clift Meadow Pavilion

Fridays	
<i>Hatha Yoga 9.30-10.45am</i>	Cross House
<i>Hipp Pilates 1.30-2.30pm</i>	Clift Meadow Pavilion
<i>Perform 3.30pm</i>	Clift Meadow Pavilion
<i>Youth Club 5pm</i>	Brocas Hall

Saturdays	
<i>Petite Dance</i>	Village Hall
<i>Tennis (age 7-13)</i>	Clift Meadow
<i>HIPP Pilates 9.30-10.30m</i>	Village Hall
<i>Karate 11.00-12.00pm</i>	Primary School Hall
<i>Hipp Pilates 1.30-2.30pm</i>	Clift Meadow Pavilion
<i>Live Country Music with Dance 8pm 1st and 3rd Saturday each month</i>	Village Hall

Sundays	
<i>See page 5 for Church services at St James's Bramley</i>	

Do you have a listing on this page? If so, please can you check that the details are correct and let me have the timings if they are missing. Any corrections or additions can be emailed to editor@bramleymagazine.org.uk

THANK YOU

Contact Details for Village Clubs and Organisations

Organisation	Name	Tel No	Email	Remarks
Parish Council	Maxta Thomas	07810 692486	www.bramley-pc.gov.uk clerk@bramley-pc.gov.uk	Not for bookings
Clift Meadow	Bookings Team	01256 260270	bookings@cliftmeadow.org.uk	Bookings
Cross House	Steve Day	07341 552732	crosshousebramley@gmail.com	Bookings
Village Hall	Catriona Hayward	07464 749997	Bookings@bvht.org.uk	Bookings
School Hall	Alison Tarrant	881339		
Activ8 Youth Club	Ed Ives	07964 069390		
Badminton	Jane Matthews	881647		
Bell Ringers	Jonathan Barclay Smith	541251	rjbarclaysmith@gmail.com	
Bramley 0-5s	Jo Weineck	07717 340985		
Bramley Tea and Coffee morning	Jane Kettridge		jk.cmcc@btconnect.com	
Bramley United FC	Mick Walsh	07802 912615/ 01256 881241	michael.walsh59@outlook.com	
Bramley Volunteer Drivers		07787 166924	Visit us on Facebook	
Brownies	Katie Slater	07545 319342	bramley.brownies@gmail.com	Now Weds only
Classical Pilates	Naomi Baker		naomi@nbkpilates.co.uk	
Clift Meadow Youth Cricket (Old Basing CC)	Nick Cooper		nickcooper1@sky.com	
Clift Meadow Youth Football (Loddon Sports)			loddonfcsecretary@outlook.com https://www.loddonsportsfc.com	
Country Music	Maureen Durrant	07512 704707		No children please
Floral Society	Linda Dove	01256 886167 07842 339161		
Friendship Walks			info@bramleyvillagehub.com	
Guides	Viv Salem		firstbramleyguides@yahoo.com	
Hipp Pilates	Jo Kemp Williams	07557 412400	jo.kemp-williams@outlook.com	
Little Apples	Jo Whatley & Sian Davies	07598 588460	manager@littleapples.org	
Lynden School of Dance & Gymnastics	Charlotte	07717 803080		
Naturally Yoga with Sam	Samantha Webber	07713 349227	www.naturallyyoga.co.uk sam@naturalnook.co.uk	
NHS Health Visitor	Kerry Frost		kerry.frost@southernhealth.nhs	
Perform	Gemma Payne	07825 916496	gemmapayne@perform.org.uk	
Petite Dance	Louise Pain	07877 890673	misslouise.petite@outlook.com	
Body Control Pilates	Heather Lewis	07785 254313	hsfitnessuk@mac.com	
Pilates	Kelly James	07789 487499	kkellyjames@aol.com	
Pilates (WG Pilates)	Wendy Gill	07961 102535	wendygill44@yahoo.co.uk	
Rainbows	Lizzie Ayres	07917 773563	bramleyrainbows@gmail.com	
Royal British Legion	Rhydian Vaughan	07774 681516		
Short Mat Bowls	Judy Foyle	881821	stevefoyle@hotmail.co.uk	
Side by Side Dog Training	Carolann Dyson	07779 121440	sidebysidedogtraining@gmail.com www.sidebyside-dogtraining.co.uk	Bookings
St Stephen's Hall	Doreen Quilter	850394	doreen.quilter@btinternet.com	Bookings
Squirrels, Beavers, Cubs and Scouts	Jodie Saunders	881113	jodie@bramley-scouts.org.uk	
Tennis (Clift Meadow)	Simon	07904 340004		
Thula Mama	Rebecca Cooch	07971 798945	rebecca.cooch@gmail.com	
Trail Runners	Richard Perkins		richardperkins@yahoo.com	
Walking 4 Fitness & Friendship	Facebook		See Facebook: Walking 4 Fitness & Friendship	
WI	Pat Cole	881715	gpcole37@gmail.com	
Wilder Bramley		07503 155669	wilder.bramley@gmail.com or visit us on Facebook	
Yoga	Mark Golding	07969 890722	goldingyoga@gmail.com goldingyoga.com	

CLASSIFIED ADVERTS

To advertise in the classified section and reach 2100 homes in and around Bramley for as little as £2 per line, contact:

Keith Dilliway
bram.mag.adverts@gmail.com

News from Whitchurch Silk Mill**Did You See the Mill on ITV News in March?**

ITV News came to the Mill to film for a feature on ribbon-making, showing some of the techniques involved in this endangered craft, and including interviews with Weaver/Tackler Shannon Bye and Mill Director Sue Tapliss. The six-minute feature was broadcast on 11 March, and it's already evident that the Mill's profile has been raised as a result. The full clip can be found on ITVX. We have a new screen in the Welcome Building which has been showing footage of ribbon weaving and production and will feature other techniques too. We hope that seeing the working inside the Mill will encourage more café users to cross the threshold into the Mill building and see our fascinating historic machinery and many information panels.

National Mills Weekend 2024, 11–12 May 10.30am–5pm

In celebration of the engineers and millwrights who built and now restore and maintain Whitchurch Silk Mill, Nigel Spender of G & H Spender Engineering, a historic Basingstoke company specialising in industrial heritage conservation and restoration, will be here to talk to visitors about the many crafts used during his company's recent conservation of the Mill's Grade Two listed Georgian waterwheel, and the historic craft of millwrighting. Included with admission fee or annual pass.

10,000 Years of Textiles, 15 May, 7–8.30pm

In this illustrated talk, Angela Pawlyn, a member of the Oxford and Kennet Valley Guilds of Weavers Spinners and Dyers, will show examples of preserved textiles. Weaving spindles and loom weights can survive for thousands of years, but it's rare for textiles to last that long. Most of what we know about ancient weaving is in the form of pictorial evidence. Angela will explain how ancient equipment

evolved into the looms seen today at the Mill. Tickets £15. Doors open at 6.30pm and tea and coffee will be available for a donation.

Weftival Textiles Festival, 5–6 July

Join us for our second Weftival event at which you can meet a community of textile and weaving professionals and learn about diverse types of weaving and textiles. There will be talks, demonstrations, production tours, a weaving exhibition and pre-bookable workshops.

The programme features the following:

Friday 5th

- a talk by Janet Philips, handweaver, fabric designer and author
- a chance to meet and talk to the production skills manager from Coldharbour Mill, one of the oldest woollen mills in the country
- 'All Things Rafia' workshop

Saturday 6th

- a 'small craft' fair, showcasing the work of small crafts makers, with a chance to talk to them about their methods and purchase their wares
- children's craft area for those 10 and under
- workshops by Tabby and Tweed and Elka Textiles

Both days

- workshops and demonstrations by Silkewoman, our own weavers, and the Kennet Valley Guild
- a production tour of the weaving floor (must be booked in advance)
- a weaving exhibition

Tickets for the workshops, and further details, are available on our website. Please note that annual passes cannot be used for this event.

Useful Websites and Contact Details**Bramley Parish Council**

Website: www.bramley-pc.gov.uk

Email: clerk@bramley-pc.gov.uk

Tel: 07810 692486

Basingstoke & Deane Borough Council

Website:

<https://www.basingstoke.gov.uk/>

Planning enquiries: <http://www.basingstoke.gov.uk/environment-and-planning>

Bin collection issues: <https://www.basingstoke.gov.uk/bin-collection-issue-form>

Grass, hedges, weeds and leaves issues: <https://www.basingstoke.gov.uk/report-grounds-maintenance-problem>

Report fly-tipping: <https://www.basingstoke.gov.uk/flytipping>

Problems with trees: <https://www.basingstoke.gov.uk/report-a-tree-problem>

Hampshire County Council

Website: www.hants.gov.uk

Highways reporting: www.hants.gov.uk/transport/roadmaintenance

Faulty streetlights: www.hants.gov.uk/transport/roadmaintenance/roadproblems/streetlight

Flooding or drainage problems: www.hants.gov.uk/transport/roadmaintenance/roadproblems/flooding

Parking issues: www.hants.gov.uk/transport/parking/parking-contravention

Rights of Way (footpath issue): www.hants.gov.uk/landplanningandenvironment/rightsofway/reportaproblem

Cinder Track Reporting

Faulty lights (from Lane End to Kirby Drive estate): [Taylor Wimpey ccwestlon@taylorwimpey.com](mailto:TaylorWimpey@taylorwimpey.com)

Tel: 01494 509090

Faulty lights (from Sherfield Road to Lane End): www.hants.gov.uk/transport/roadmaintenance/roadproblems/streetlight

WE'RE MORE THAN JUST A LEAKY TAP



Boilers

Installations
Servicing
Breakdowns

Bathrooms

Cloakrooms
En-suites
Shower rooms



Plumbing



Taps
Toilets
All plumbing jobs



Contact us for a FREE estimate



info@catlinph.co.uk • 07774 741021

PUZZLE SOLUTIONS

Cryptic Crossword No: 78 Solution

ADAGE	1	MADCOWDISEASE	2
ADMIRAL	3	AROMA	8
OBJECT	4	ISLE	9
DAYDREAM	5	READING	10
ENIGMA	6	ENTRY	11
EDELWEISS	7	TREATABLE	12
TEAR	13	CALLOW	15
BATH	14	DAM	18
CARPENTER	15	ARCHES	19
LEAF	16	PERFORMER	21
OTTO	17	ABBEY	24
DAMASCUS	18	BEDSIDE	26
CABINET	20	TEAL	27
FABLED	22	ANGER	28
RADIUM	23	READJUSTMENTS	29
YARDS	25		

Down: 1, 3, 4, 5, 6, 7, 13, 14, 15, 16, 17, 18, 19, 20, 21, 22, 23, 24, 25, 26, 27, 28, 29

Across: 2, 8, 9, 10, 11, 12, 15, 18, 19, 21, 24, 26, 27, 28, 29

CodeWord No: 64 Solution

S	K	N	A	Y	T	E	S	D	A	E	H
L	E	T	I	S	M	M	C				
L	A	E	D	I	N	O	R	G	E	N	
I	K	V	X	O	I	E					
R	N	I	N	I	E	G	R	S	U	P	U
G	A	T	G								Q
S	A	N	C	S	C	I	N	A	R	F	
E	A										R
R	E	E	N	O	P	I	S	N	E	V	E
I	N	I	I	I	S	W	P				
S	A	C	I	A	D	O	Z	E	B	A	M
E	H	A	N	U	R	A					U
D	E	A	T	P	U	D	E	D			J

OAKLEY
EST. 1982
CARPETS & FURNITURE

Showroom
The old Station Andover Rd Oakley Basingstoke RG23 7HA
Tel: (01256) 782070
OPEN 9am - 5pm MONDAY - FRIDAY
CLOSED WEDNESDAY SATURDAY 10am - 3pm

😊 SERVING BASINGSTOKE FOR 40 YEARS 😊

CARPETS, VINYL, WOOD, LAMINATE, BEDS, DINING SETS,
LOUNGE FURNITURE, BEDROOM FURNITURE, STUDY
FURNITURE.

If you want FURNITURE and you want it FAST call in and see it, feel it and take it away today or use our FREE local delivery service

**CARPET EDGING SERVICE CARRIED OUT IN OUR STORE
ORDER RUGS ANY SIZE TO SUIT YOUR ROOM**
www.oakley-furnishing.co.uk

Bramley Osteopaths

Becky Hall MSc (Paed Ost), BSc (Ost Med), ND, Dip SMT
REGISTERED OSTEOPATH

7 St Marys Avenue, Bramley, Hants RG26 5UU
email: beckyhall@bramleyosteopaths.com
www.bramleyosteopaths.com
phone: 01256 884139

Disclaimer: Bramley Magazine is intended to provide readers with information they may find useful and of interest. We take all reasonable steps to keep this information current and accurate, but errors can occur. The editor reserves the right to make changes to any contributions. Bramley Magazine is not responsible for and does not endorse any advertising, products, or opinions expressed in this publication and shall not be liable to any party as a result of information published herein.

All photographs are included with kind permission and may not be reproduced.

**32 Years
serving the local
community**

RAINBOW DOUBLE GLAZING LIMITED



1992-2024

Your truly local double glazing company

32 successful years



Energy Window	
	A
Energy Index (without system) 0	
The climate zone is: UK	
Thermal Transmittance (U _g)	1.4 W/m ² ·K
Solar Factor (g _{gl})	0.69
Effective Air Layer (L _{eq})	0.00 m ² ·K

**Windows • Doors • Roofline
Conservatories • Orangeries
Entrance Porch • Garage Conversions
Rainbow Warm Roof Conversions**

- No deposit**
- No hassle**
- Energy 'A' Rated**
- 10 year Guarantee**
- Payment on completion**



For a free no-obligation quotation please call FREEPHONE:

0800 026 46 42 or 0118 970 1770

www.rainbowdoubleglazing.co.uk